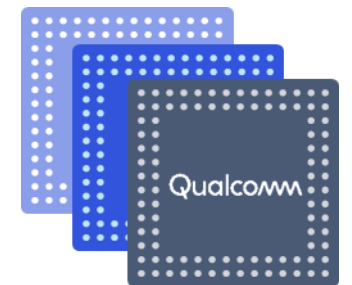


Qualcomm® Package Manager Quick Start

80-PJ922-2 Rev. E



Confidential and Proprietary – Qualcomm Technologies, Inc.

Qualcomm
Confidential – May Contain Trade Secrets
2020-09-11 21:14:12 PDT
zhaihaifeng10@qcom.com

Confidential and Proprietary – Qualcomm Technologies, Inc.

NO PUBLIC DISCLOSURE PERMITTED: Please report postings of this document on public servers or websites to: DocCtrlAgent@qualcomm.com.

Restricted Distribution: Not to be distributed to anyone who is not an employee of either Qualcomm Technologies, Inc. or its affiliated companies without the express approval of Qualcomm Configuration Management.

Not to be used, copied, reproduced, or modified in whole or in part, nor its contents revealed in any manner to others without the express written permission of Qualcomm Technologies, Inc.

All Qualcomm products mentioned herein are products of Qualcomm Technologies, Inc. and/or its subsidiaries.

Qualcomm is a trademark of Qualcomm Incorporated, registered in the United States and other countries. Other product and brand names may be trademarks or registered trademarks of their respective owners.

This technical data may be subject to U.S. and international export, re-export, or transfer (“export”) laws. Diversion contrary to U.S. and international law is strictly prohibited.

Qualcomm Technologies, Inc.
5775 Morehouse Drive
San Diego, CA 92121
U.S.A.

© 2018-2019 Qualcomm Technologies, Inc. and/or its subsidiaries. All rights reserved.

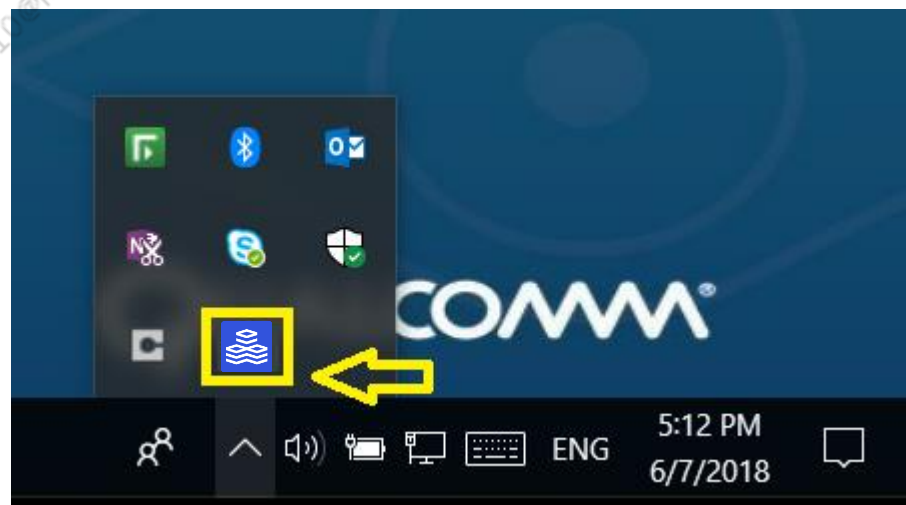
Revision History

Revision	Date	Description
A	November 2018	Initial release
B	March 2019	Updated Client Requirements Updated Locate License ID Information Images Updated License Activation Questions Added Activate and Deactivate Licenses
C	April 2019	Updated Client Requirements Added External Administrator
D	July 2019	Updated Client Requirements for Mac Updated Quick Start Registration instructions Added Quick Start Mac instructions
E	August 2019	Updated Client Requirements for Linux Added Quick Start Linux instructions Updated Tools and Licenses for Linux

Note: There is no Rev. I, O, Q, S, X, or Z per Mil. standards.

Qualcomm® Package Manager

- Qualcomm Package Manager (QPM) is a light-weight, always-on client software that sits in the system tray to help simplify user interactions with Qualcomm software tools:
 - Authenticates tools using Qualcomm credential
 - Downloads and installs tools without opening a browser
 - Notifies user of new tool updates and license expiration
 - Activates and deactivates licenses



Note: QPM is a Windows application and currently not available in Linux and Mac.

Client Requirement

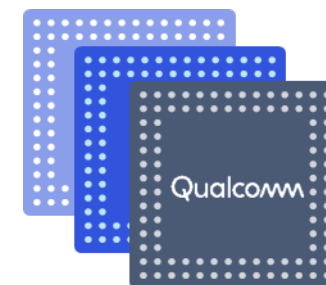
- Minimum OS
 - Mac: 10.14 or above
 - Windows: Windows 7 and .Net Framework v4.5.2 or above
 - Linux: Ubuntu 16.04 or above
- All users must have their own Qualcomm credentials
 - Register a Qualcomm account at:
<https://createpoint.qti.qualcomm.com/dashboard/public/registration/register>
- For authentication, client machine must connect to <https://corpawswsgwx.qualcomm.com>
- A client license can operate in offline mode (not connected to server) for a maximum 14 days before it must be reauthenticated by the server

Quick Start

Qualcomm

Qualcomm
Technologies, Inc.

Qualcomm
Confidential - May Contain Trade Secrets
2020-09-11 21:14:12 PDT
zhaihaifeng10@longcheer.com



Qualcomm Package Manager Quick Start

Step 1



Log In

- Log in using your Qualcomm credential
- For user registration, go to [CreatePoint](#)

Step 2



Install QPM

- Download & install QPM through initial tool installation

Step 3



Activate License

- Activate licenses by logging in or providing your specific License ID to QPM
- Contact your administrator for License ID

Step 4



Upgrade Tool

- Download, install, or upgrade tools, i.e., QXDM, QCAT, etc.

Step 5



Minimize

- Minimize and keep Qualcomm Package Manager in system tray for best performance and experience.

Step 1: Register a Qualcomm User Account

- Visit <https://createpoint.qti.qualcomm.com> and click Register
- **Users must have:**
 - An approved business email address
 - Account request approval is automatic if your organization has an approved business domain on file with Qualcomm
- **You can still register an account without an already-established business relationship**
 - If you do not yet have a business relationship established with Qualcomm or if automatic approvals are disabled for any reason, approval will contain materials that are available to the public
- **Identity verification**
 - Registration requires email address verification
 - Check SPAM or JUNK email folder, if you do not receive a verification email
- **No response to Qualcomm ID Registration Service**
 - After three email verification reminders, registration will be rejected
 - You can attempt registration again if your prior attempt was rejected

Step 2: Download and Install QPM

- Install QPM through initial tool installation from CreatePoint (<https://createpoint.qti.qualcomm.com/>).

Home

Documents

Hardware Components

Software Code

Tools

Support

Hardware Purchase

All Products

Edit

Tools: Choose a Tools Suite

Tools: Choose a Tools Suite

All Suites

Filter Results

QualcommPackageManager

Apply

Your Filters

Build Type

Installer

Visibility

All Tools

Subscribe

Unsubscribe

Name	Full Name	Version
QualcommPackageManager.WIN.1.0 Installer	Qualcomm® Package Manager	10064.4

Qualcomm Package Manager

Qualcomm Package Manager

version 1.0.64.4

License Agreement

Please review the license terms. You must accept the license agreement to proceed.

Access to, and use of, this tool is subject to the terms and conditions of the corresponding agreement(s) in place with Qualcomm Technologies, Inc. or its affiliates. Unauthorized access or use is prohibited.

Session information such as tool version, operating system, user ID, IP address, or timestamp may be collected for internal business purposes or tool improvements and is subject to the Qualcomm Privacy Policy (<http://www.qualcomm.com/site/privacy>).

By accessing or using this tool, you agree to the foregoing.

Copyright © 2018-2019, Qualcomm Technologies Incorporated. All rights reserved.

☐ I accept the License Agreement

INSTALL

Qualcomm® Installer

Qualcomm Technologies Inc.

Qualcomm

Step 3: Activate Tool Licenses (Windows)

- Based on a company's entitlement, some licenses will be activated by default upon QPM log in.
- For other license activation such as 5G license, add the 5G license ID to QPM.

Sign in with Qualcomm credential

Sign In with Qualcomm Credentials

Username or Email

Password

Forgot username or password?

New User? Register now...

Sign In

Qualcomm

©2018-2019 Qualcomm Technologies, Inc. and/or its affiliated companies
All Rights Reserved.

Click  to see **Licenses**

Qualcomm® Package Manager

jfeng

AllInstalled

QXDM

Installed v4.0.247 | 6/4/2018

About

Provides a diagnostic client for a target mobile phone

4.0.247

Uninstall

LICENSES

LICENSE GROUP ID	EXPIRES	STATUS	ACTION
0188e316-6ff2-11e8-b548-02d1be17a85f	3/6/2020		

Online

Click  to **Add License** as necessary

Qualcomm® Package Manager

jfeng

AllInstalled

QXDM

Installed v4.0.247 | 6/4/2018

About

Provides a diagnostic client for a target mobile phone

4.0.247

Uninstall

Activate License

Enter License Group ID

1234567-6584-1235-6854-215484563894

Activate

Cancel

About Qualcomm Package Manager

Support

Settings

+

Add License

Refresh

Sign out

Close

Online

Step 3: Activate Tool Licenses (Mac)

- Based on a company's entitlement, some licenses will be activated by default upon QPM log in.
- For other license activation such as 5G license, add the 5G license ID to QPM.

Sign in with Qualcomm credential

Sign In with Qualcomm Credentials

Username or Email

Password

Forgot username or password?

New User? Register now...

Sign In

Qualcomm

©2018-2019 Qualcomm Technologies, Inc. and/or its affiliated companies
All Rights Reserved.

License status

QCAT

v06.30.78.00 is installed
v06.30.78.00 available

v06.30.78.00 Staging

Refresh

ABOUT

Integrated software package that allows you to decode the contents of binary log file

LICENSES

License Group ID	Activation ID	Expiration	Action
a5cdad9-27bc-11e8-b4e8-02d1be17a85f	f66b1d3-9466-11e9-85f5-028d88600cae	2020-03-14	Deactivate

QXDM

Not Installed
v1.2.3.8 available

1.2.3.8 Staging

Install

ABOUT

Provides a diagnostic client for a target mobile phone

LICENSES

License Group ID	Activation ID	Expiration	Action
85b5d598-78ce-11e8-b548-02d1be17a85f	99d47912-9466-11e9-85f5-028d88600cae	2020-06-25	Deactivate

Click **Add License** to activate licenses

QualcommPackageManager

License

Products

Help

Add License

Restore & Refresh Licenses

Add License

License Group ID

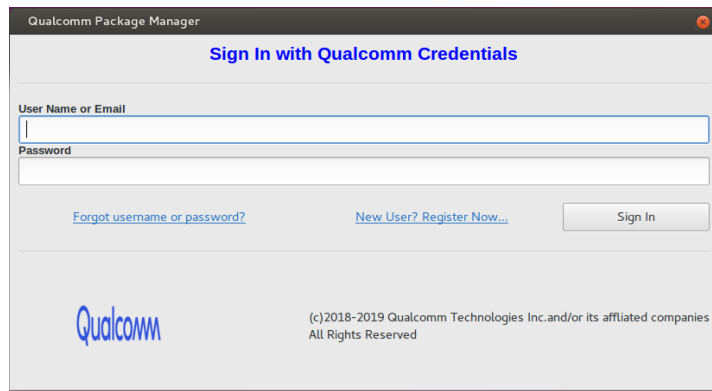
Cancel

Add

Step 3: Activate Tool Licenses (Linux)

- Based on a company's entitlement, some licenses will be activated by default upon QPM log in.
- For other license activation such as 5G license, add the 5G license ID to QPM.

Sign in with Qualcomm credential



Qualcomm Package Manager

Sign In with Qualcomm Credentials

User Name or Email

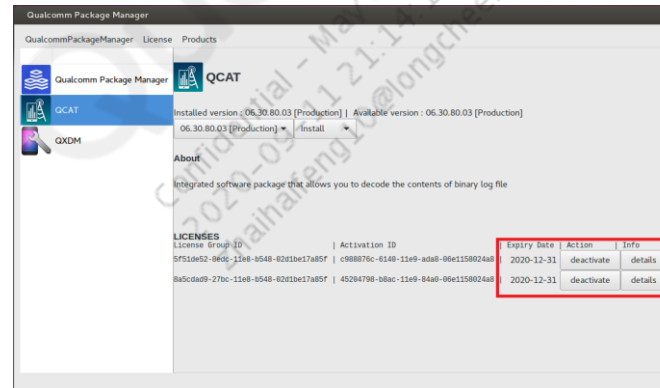
Password

[Forgot username or password?](#) [New User? Register Now...](#) [Sign In](#)

Qualcomm

(c)2018-2019 Qualcomm Technologies Inc. and/or its affiliated companies
All Rights Reserved

License status



Qualcomm Package Manager License Products

Qualcomm Package Manager QCAT QXDM

Installed version: 06.30.80.03 [Production] | Available version: 06.30.80.03 [Production]

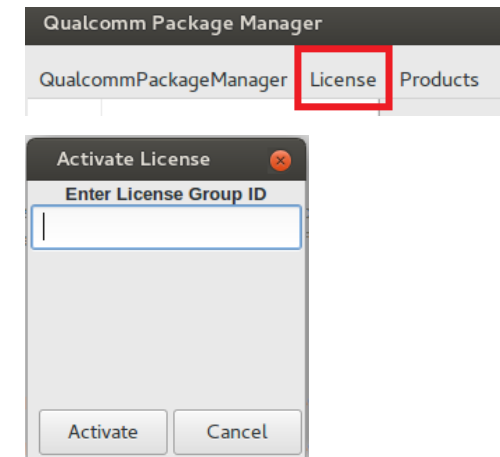
06.30.80.03 [Production] Install

About

Integrated software package that allows you to decode the contents of binary log file

LICENSES	Activation ID	Expiry Date	Action	Info
License Group ID				
9F51de52-0802-11e8-8548-62e1be17a85f	c988870c-6348-11e9-8a68-09e1158024a8	2020-12-31	deactivate	details
8a5cdad9-27bc-11e8-8548-62e1be17a85f	45204798-08ac-11e9-84a8-09e1158024a8	2020-12-31	deactivate	details

Click **Add License** to activate licenses



Qualcomm Package Manager License Products

Activate License

Enter License Group ID

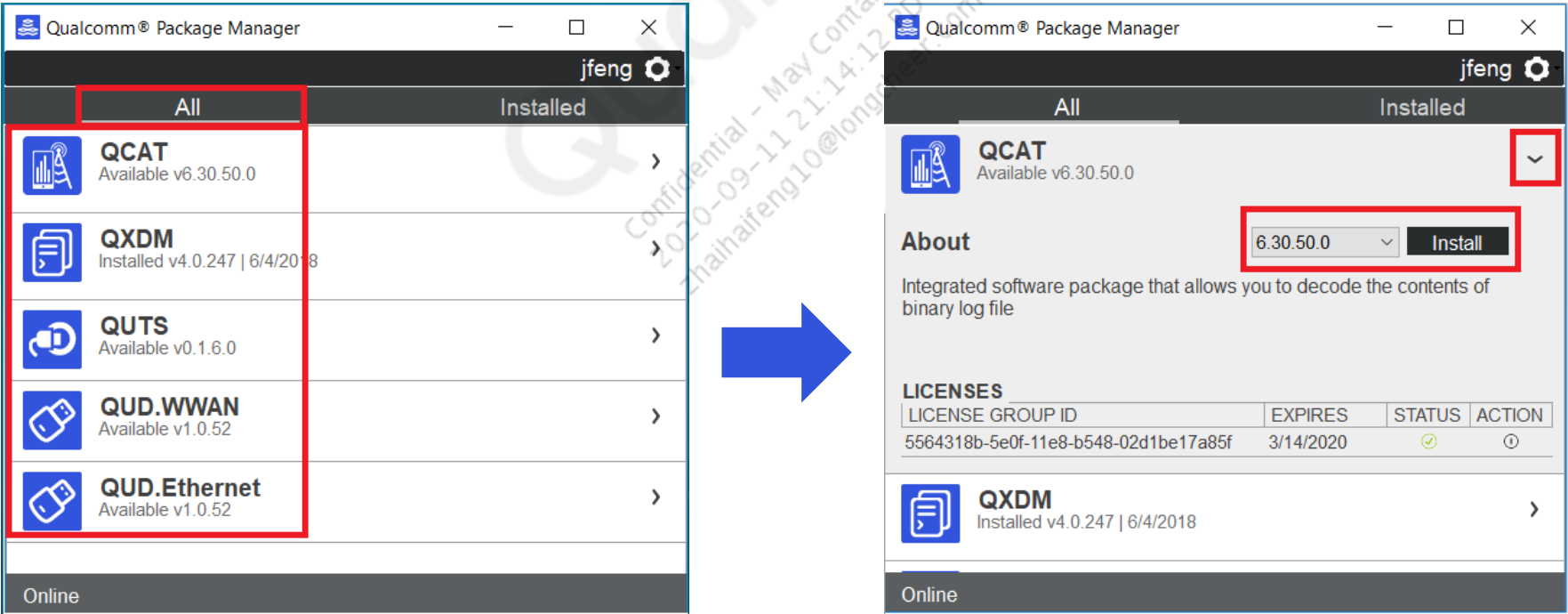
[Activate](#) [Cancel](#)

Step 4: Download and Install Tools (Windows)

- Based on a company's entitlement, available tools will be displayed for download and installation.


Click the **All** tab to see all available tools for download and install

Click  to **Install**



Step 4: Download and Install Tools (Mac)

- Based on a company's entitlement, available tools will be displayed for download and installation.



QCAT

v06.30.78.00 is installed
v06.30.78.00 available

06.30.78.00 Staging


Refresh

ABOUT

Integrated software package that allows you to decode the contents of binary log file

LICENSES

License Group ID	Activation ID	Expiration	Action
8a5cdad9-27bc-11e6-b548-02d1be17a85f	f66b1d3-9466-11e9-85f5-028d88600cae	2020-03-14	Deactivate



QXDM

Not Installed
v1.2.3.8 available

1.2.3.8 Staging

Install

ABOUT

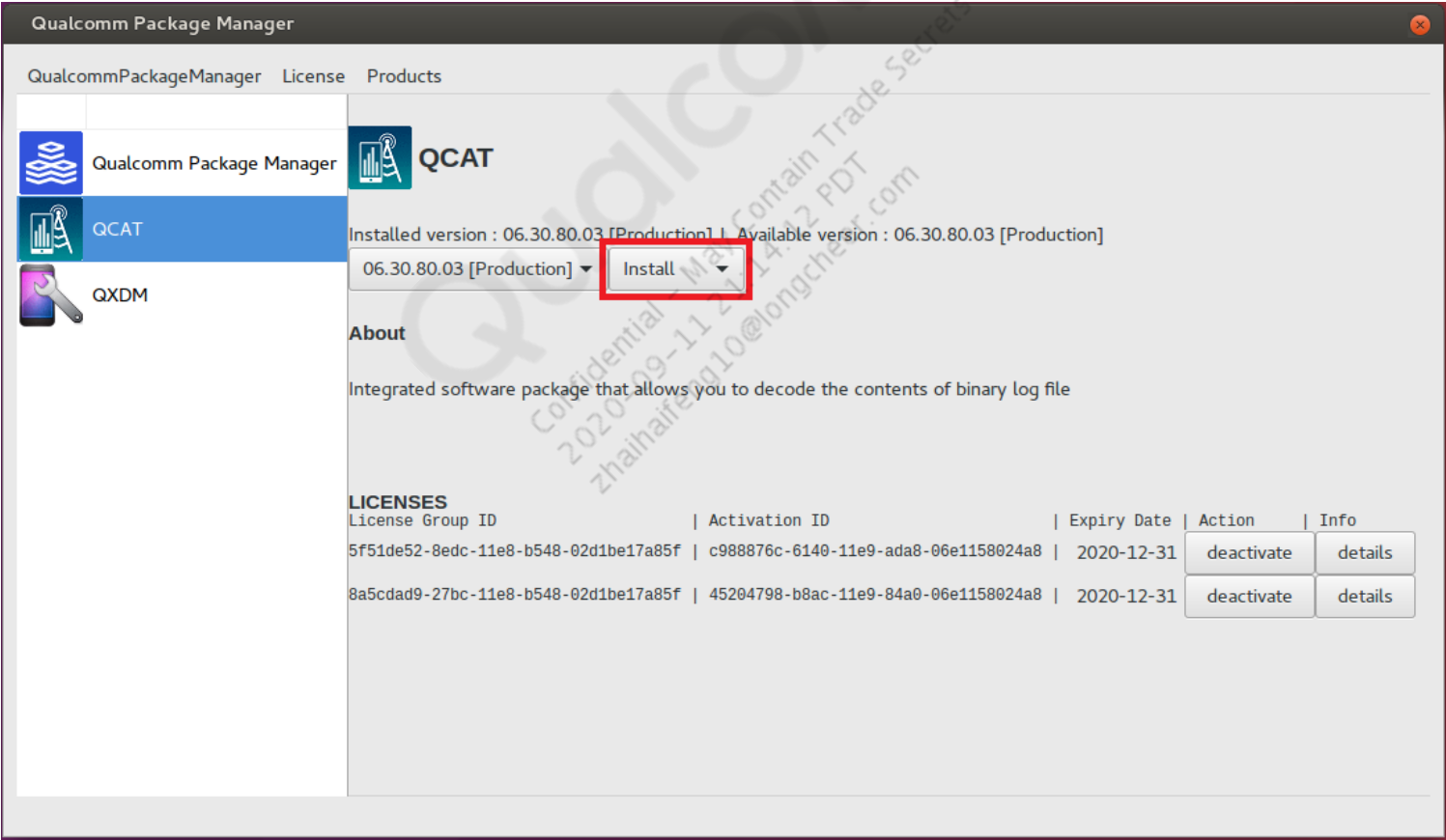
Provides a diagnostic client for a target mobile phone

LICENSES

License Group ID	Activation ID	Expiration	Action
85b5d596-78ce-11e6-b548-02d1be17a85f	99c47912-9466-11e9-85f5-028d88600cae	2020-06-25	Deactivate

Step 4: Download and Install Tools (Linux)

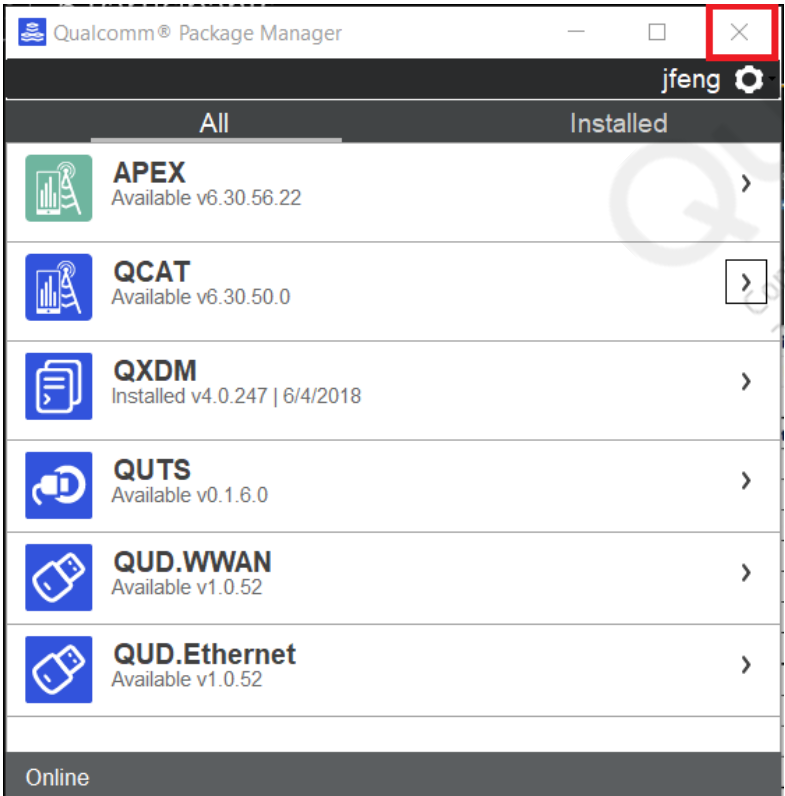
- Based on a company's entitlement, available tools will be displayed for download and installation.



Step 5: Minimize to System Tray

- Once tools have been installed and licenses activated, minimize QPM to the system tray.

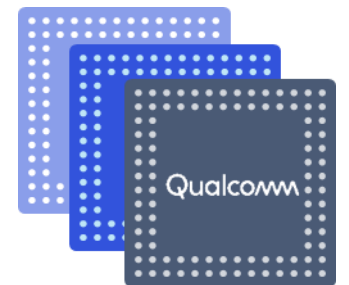
Click x to minimize Qualcomm Package Manager



Double-click  in system tray to open Qualcomm Package Manager



Tool Licenses

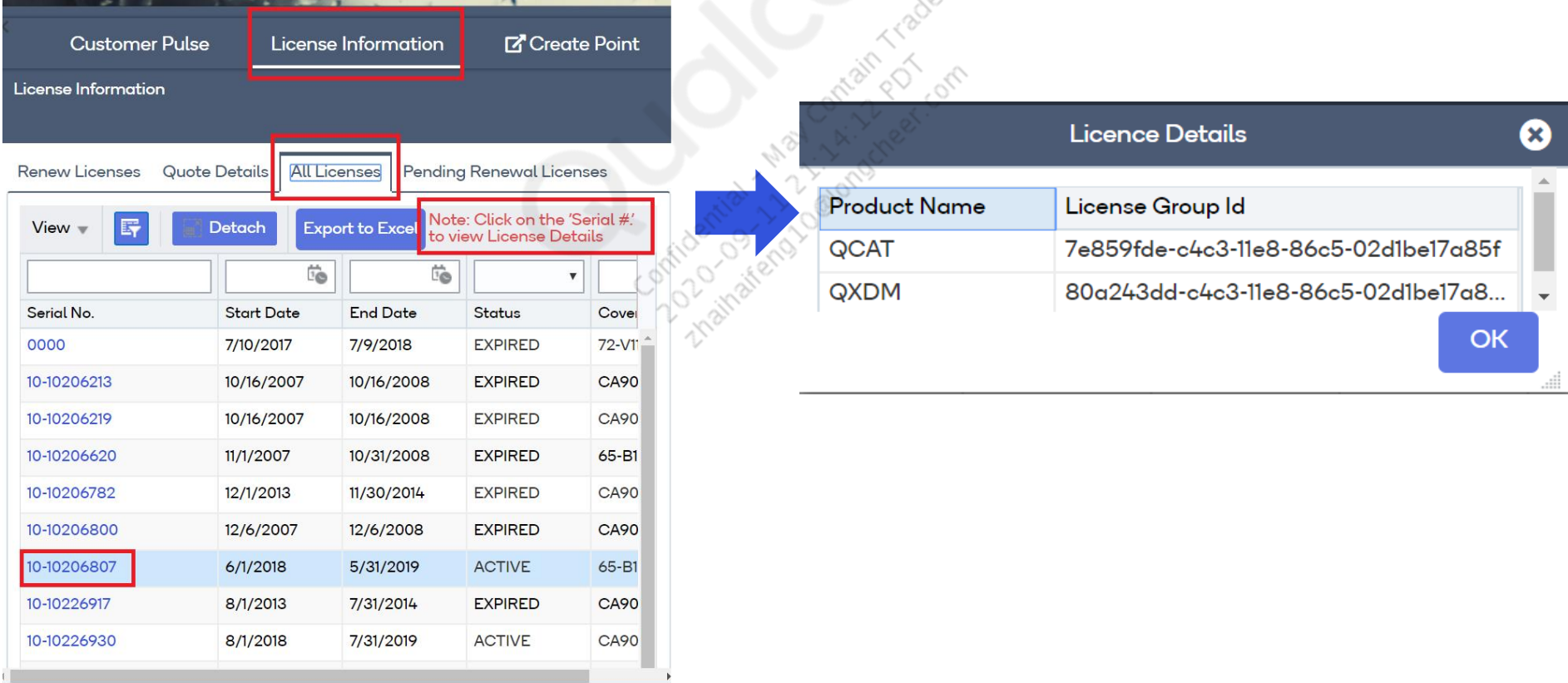


Locate License ID Information

- Go to <https://cp.qti.qualcomm.com> and log in to Sales Center

Click **License Renewals > All Licenses > Serial No.**

Corresponding tool license group ID appears in a pop-up box



Customer Pulse License Information Create Point

License Information

Renew Licenses Quote Details All Licenses Pending Renewal Licenses

View Detach Export to Excel Note: Click on the 'Serial #' to view License Details

Serial No.	Start Date	End Date	Status	Cover
0000	7/10/2017	7/9/2018	EXPIRED	72-VI
10-10206213	10/16/2007	10/16/2008	EXPIRED	CA90
10-10206219	10/16/2007	10/16/2008	EXPIRED	CA90
10-10206620	11/1/2007	10/31/2008	EXPIRED	65-B1
10-10206782	12/1/2013	11/30/2014	EXPIRED	CA90
10-10206800	12/6/2007	12/6/2008	EXPIRED	CA90
10-10206807	6/1/2018	5/31/2019	ACTIVE	65-B1
10-10226917	8/1/2013	7/31/2014	EXPIRED	CA90
10-10226930	8/1/2018	7/31/2019	ACTIVE	CA90

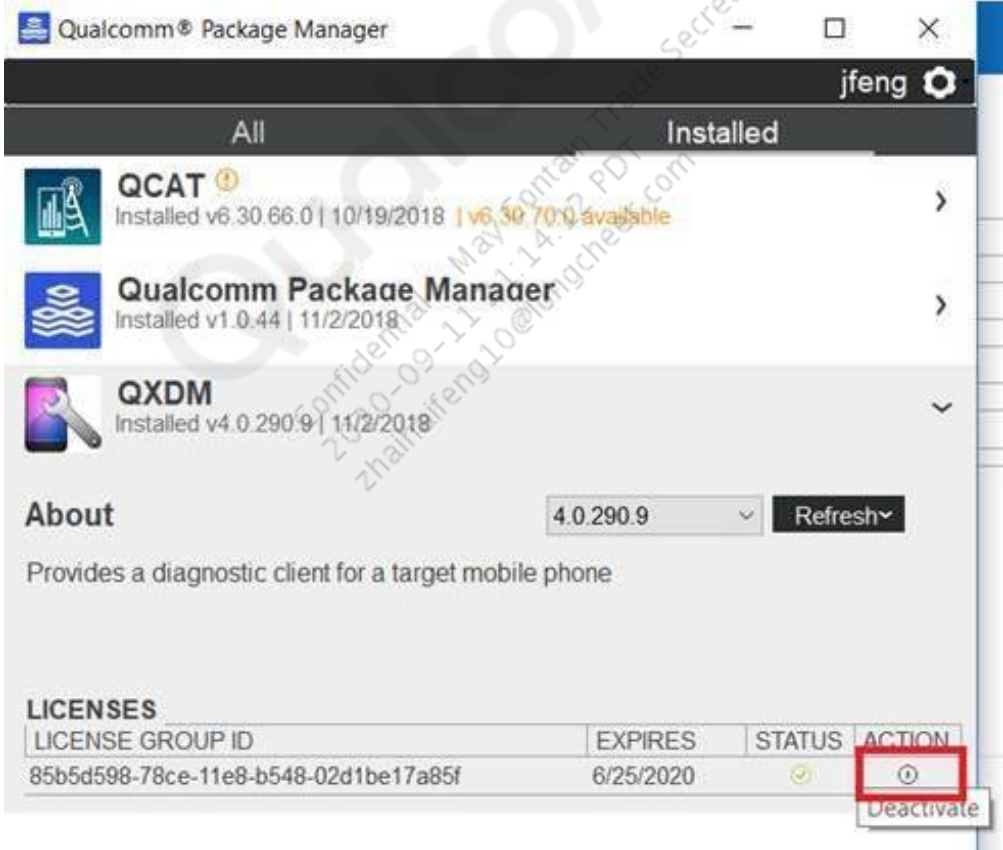
Licence Details

Product Name	License Group Id
QCAT	7e859fde-c4c3-11e8-86c5-02d1be17a85f
QXDM	80a243dd-c4c3-11e8-86c5-02d1be17a8...

OK

Activate and Deactivate Licenses (Windows)

- Once license is added to Qualcomm Package Manager, user can activate and deactivate license by clicking on the action button next to the license info



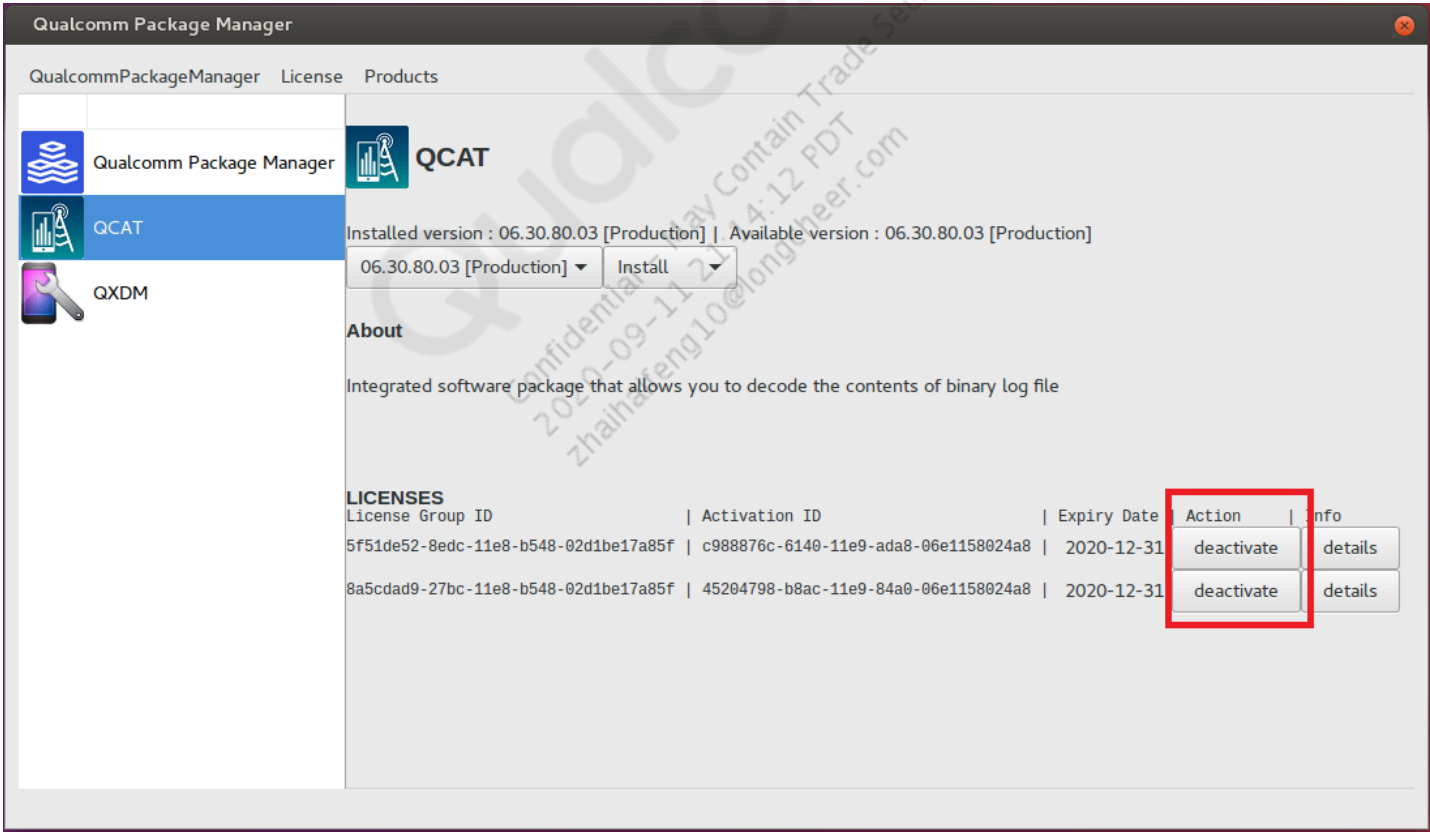
Activate and Deactivate Licenses (Mac)

- Once license is added to Qualcomm Package Manager, user can activate and deactivate license by clicking on the action button next to the license info

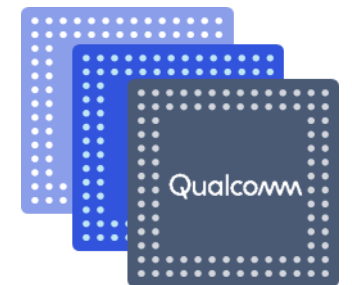


Activate and Deactivate Licenses (Linux)

- Once license is added to Qualcomm Package Manager, user can activate and deactivate license by clicking on the action button next to the license info



External Administrator



Request External Administrator Access

- A company can request external administrator access for a limited number of users (less than 10 admins for each org ID). To request access, provide the following information to ToolLicenseSupportRequest@qti.qualcomm.com:
 - Subject: Request Tool External Administrator Access
 - Content: Name and Qualcomm User ID
- External administrators can only view license status and deactivate licenses remotely under the administrator org ID.

License Management – Company View

- Log into <http://www.lime.qualcomm.com>

Qualcomm Software License Management

1Welcome jfeng

License groups

2Search (by license group identifier or product)

Identifier	Product	Company	Type	Quantity	Active Count		
f8564e3c-d655-11e8-86c5-	Tool product 1	Qualcomm	All	20000	7695	Details	Licenses
bf6023b8-d663-11e8-86c5-	Tool product 2	Qualcomm	SITE	20000	7567	Details	Licenses

- 1 User ID
- 2 Search and filter by LicenseGroupID or Product (LicenseGroupID is **not** a serial number)
 - Identifier = LicenseGroupID (license ID used for tool activation)
 - Product = Tool Product (QXDM, QCAT, etc.)
 - Company = Company name associated to administrator
 - Type = License type
 - Quantity = Number of seats associated to LicenseGroupID
 - Active Count = Number of seats currently in use
 - Details = Provides feature and expiration date details
 - Licenses = Provides license activation details and the ability to deactivate license remotely

License Management – LicenseGroupID View

■ Details

LicenseGroup Details

ID:

f8564e3c-d655-11e8-86c5-l

Company:

Qualcomm

Product:

Tool Product 1

Features

Name	Start Date	End Date	Length (in days)
Core	2018-10-22	2020-10-22	730

- **ID** = GroupLicenseID
- **Company** = Company legal name
- **Product** = Tool product
- **Features:Name** = Feature included
- **Features:StartDate** = License start date
- **Features:EndDate** = License expiration date
- **Features: Length (in days)** = Total days of operation before EndDate.

■ Licenses

Licenses

Search (by username)

Activation Date	Status	Username	Computer	
2018-12-05	A	jfeng	JFENG	Deactivate

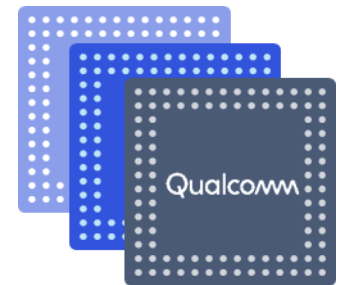
1

15

- **Activation Date** = Date the license was activated
- **Status** = Active/Deactivated
- **Username** = User ID who activated the license
- **Computer** = Computer that is consuming the license
- **Deactivate** = Deactivate the license

Frequently Asked Questions

Qualcomm
Confidential - May Contain Trade Secrets
2020-09-11 21:14:12 PDT
zhaihaifeng10@longcheer.com

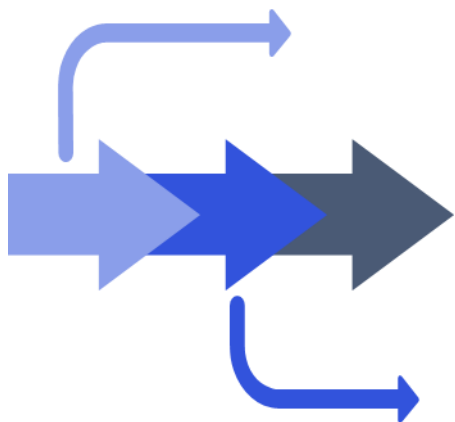


License Activation Questions

Question	Answer
My QXDM credential does not work anymore. Where do I enter the Admin Key?	The Qualcomm License Management System was phased out and those credentials are not applicable to QPM. Users must register a Qualcomm account through CreatePoint to log into QPM. Note: It is important to register a user account under your respective Org ID.
I can log into QPM, but I do not know how to activate licenses.	See Tool Licenses.
How do I activate a license offline?	Offline activation is not available in QPM. Tool licenses must be activated online.
Do I have to be online all the time to use Qualcomm tools?	Qualcomm tools can be used offline for 14 days before they are required to be reauthenticated by the server.
Does QPM support dongle?	QPM does not support dongle. Contact salesops.testtools@qti.qualcomm.com to convert dongle to an online license.

For other technical assistance, please file a Tool CASE with the following info

- User ID
- License Group ID which you used for license activation
- Debug files from %temp%/QIK/Logs and %temp%/QualcommPackageManager/Logs
- Qualcomm Package Manager Screenshot



Questions?

<https://createpoint.qti.qualcomm.com>
